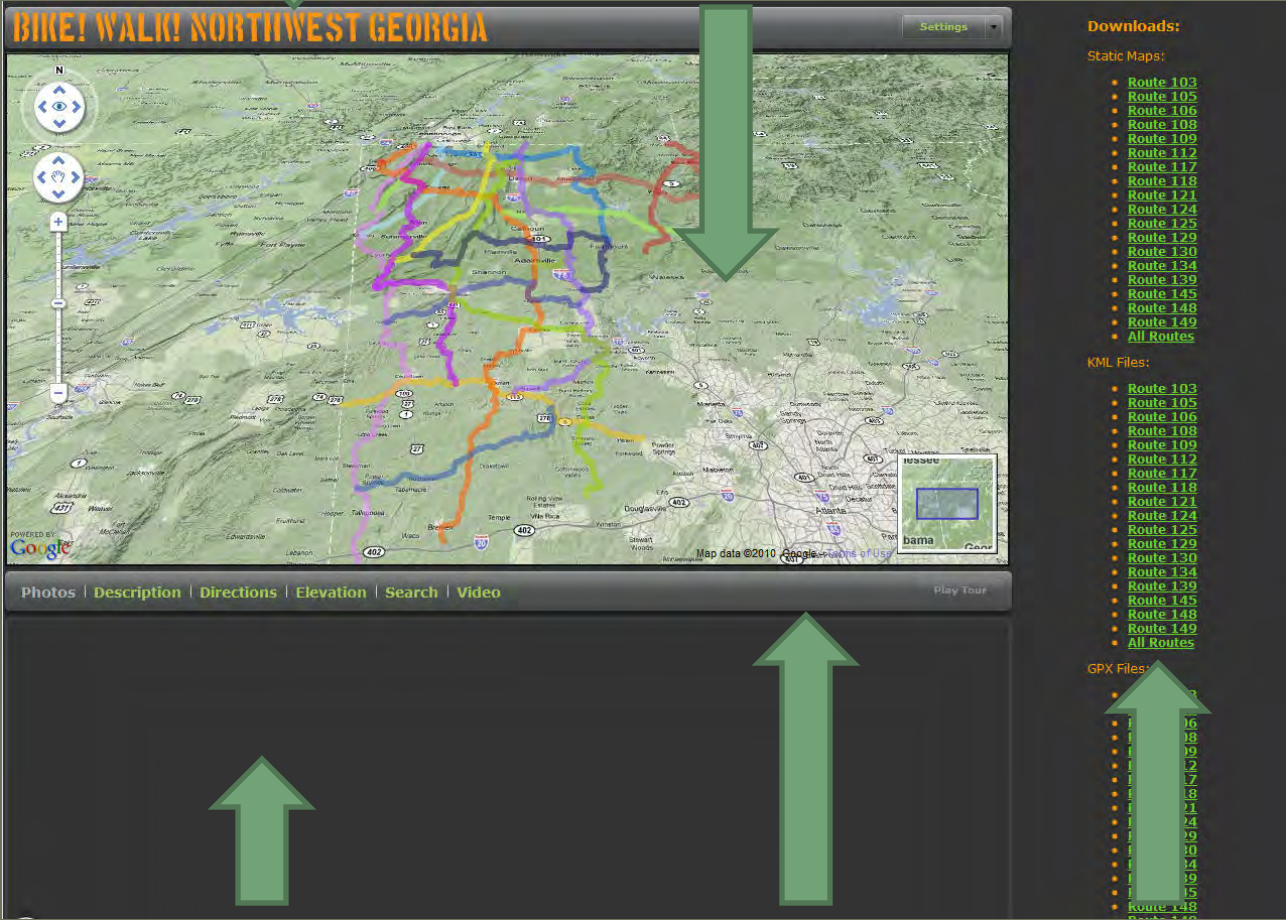


title bar

Main Map



information display area

information bar

side bar

# Overview of application.

- The current state shows the application open to its maximum width.
- The application consists of a title bar, a main map, an information bar, an information display area, and a side bar.

title bar

Main Map

The screenshot shows a web application interface for a cycling and walking route planner. The main map area displays a topographic map of Northwest Georgia with numerous colorful routes overlaid. The interface includes a title bar at the top, a main map area, and a sidebar on the right. The sidebar contains sections for 'Downloads:', 'Static Maps:', 'KML Files:', and 'GPX Files:', each listing various route numbers. At the bottom of the map area, there is an information bar with navigation options like 'Photos', 'Description', 'Directions', 'Elevation', 'Search', and 'Video'. A 'Play Tour' button is also visible.

information display area

information bar

side bar

## Reduced Window

- The current state shows the application opened to its minimum width.
- The application will automatically scale to the width of the web browser window.

BWNG logo button

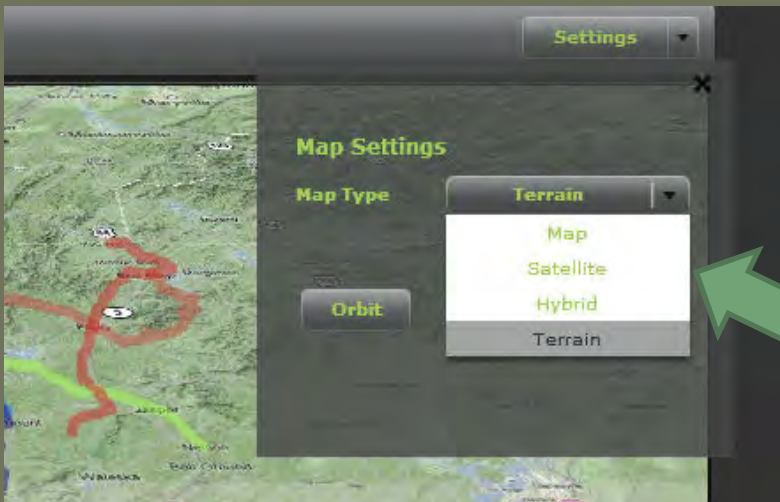
Click on the "Settings" Button



"Orbit" Button

"Orbit" speed slider

"Map Type" expanded



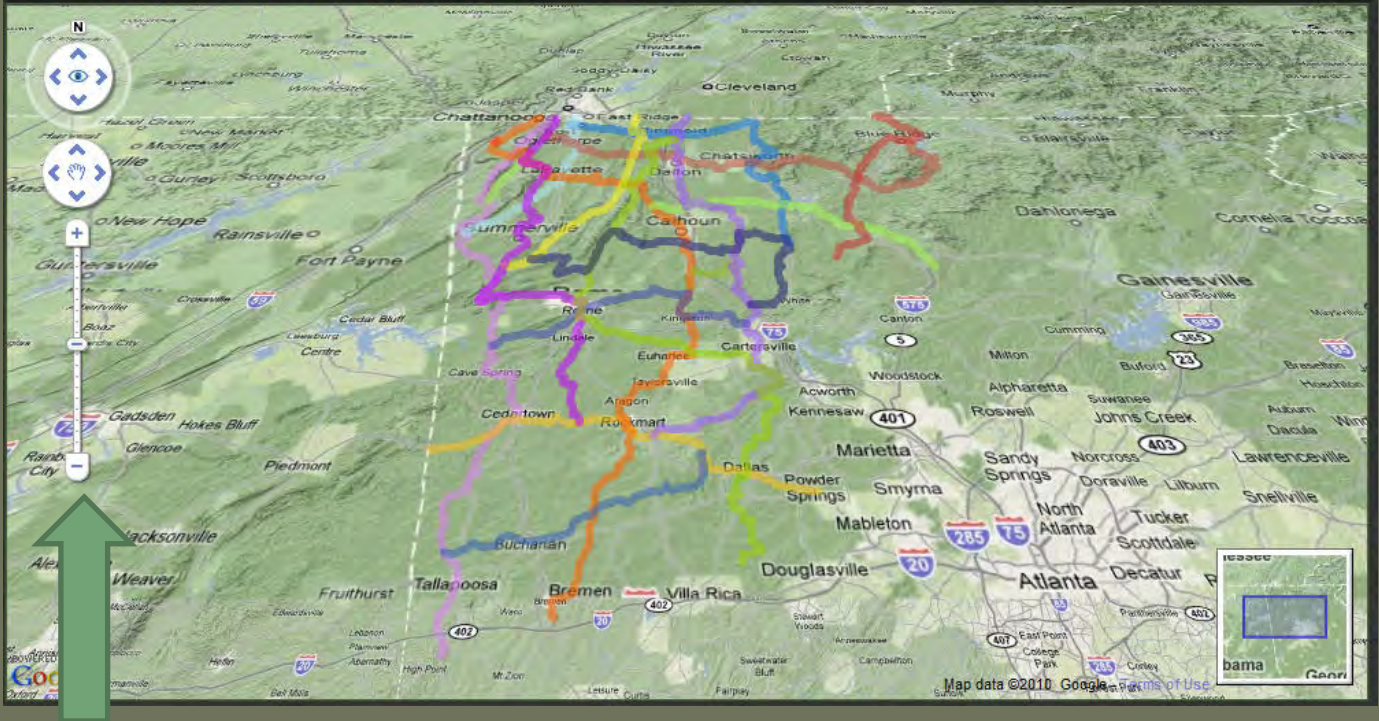
## Title Bar

- The current state shows the title bar with the "Settings" drop down menu opened and the BWNG logo button on the left.
- The "Settings" menu contains the "Map Type" menu, the "Street View" button, and the "Orbit" button with speed slider.
- Included in the "Map Type" menu are the "Map", "Satellite", "Hybrid" and "Terrain" options for the main map background. To change the map type simply click on the "Map Type" button to expand the options and click on the desired map type.
- The "Orbit" button cause the map to spin/orbit around the current center point of the map. Use the slider bar to adjust the speed of the orbit. While orbiting the "Orbit" button will be replaced by a "Stop" button. To exit the orbit simply click the "Stop" button.
- At anytime click on the "Bike! Walk! Northwest Georgia" logo to return the original application view point.



## Title Bar(Street View)

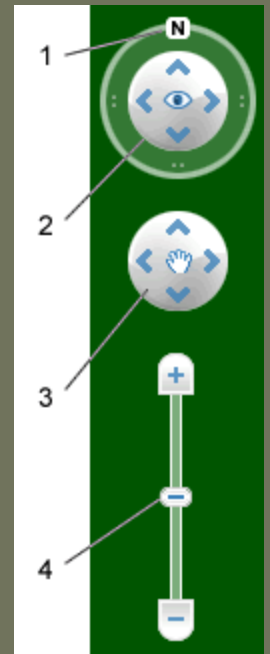
- To access Google street view simply click on the "Street View" button. This will cause the Street View window to expand above the title bar.
- Street View allows you to explore Google's 3D imagery the routes and roads.
- To adjust the view in Street View use the pan control and zoom buttons in the top left of the window to change the camera view point. You can also click and drag to pan in the 3D space and double click to zoom to the selected point.
- A full screen icon located in the top right of the window can be clicked to expand to a full screen view.
- To exit the Street View click on the "OFF" button.

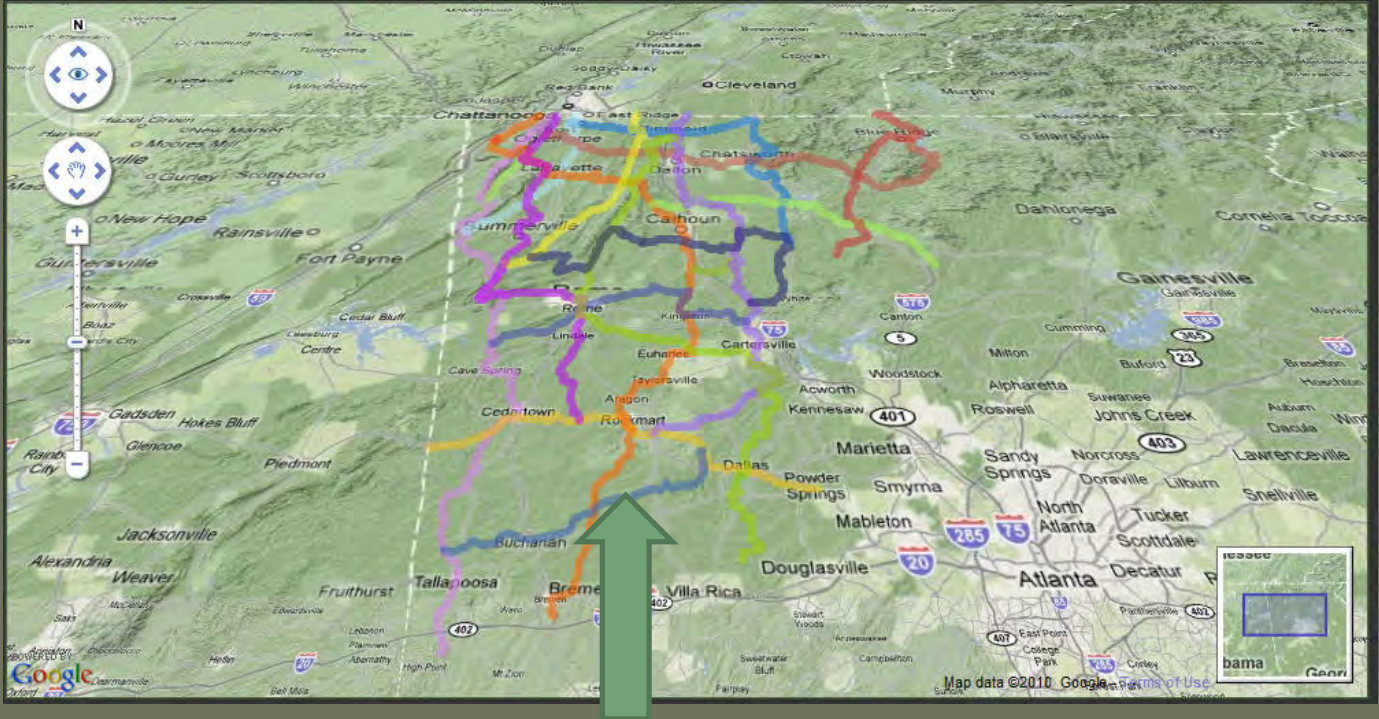


## Navigation Controls

# Main Map(Navigation)

- 1. Click the north-up button to reset the view so that north is at the top of the screen. Click and drag the ring to rotate your view
- 2. Use the Look joystick to look around from a single vantage point, as if you were turning your head. Click an arrow to look in that direction or continue to press down on the mouse button to change your view. After clicking an arrow, move the mouse around on the joystick to change the direction of motion.
- 3. Use the Move joystick to move your position from one place to another. Click an arrow to look in that direction or continue to press down on the mouse button to change your view. After clicking an arrow, move the mouse around on the joystick to change the direction of motion.
- 4. Use the zoom slider to zoom in or out (+ to zoom in, - to zoom out) or click the icons at the end of the slider. As you move closer to the ground.
- You can also use the mouse to click and drag on the map surface. This will cause the map to pull/shift in the direction of the mouse drag.

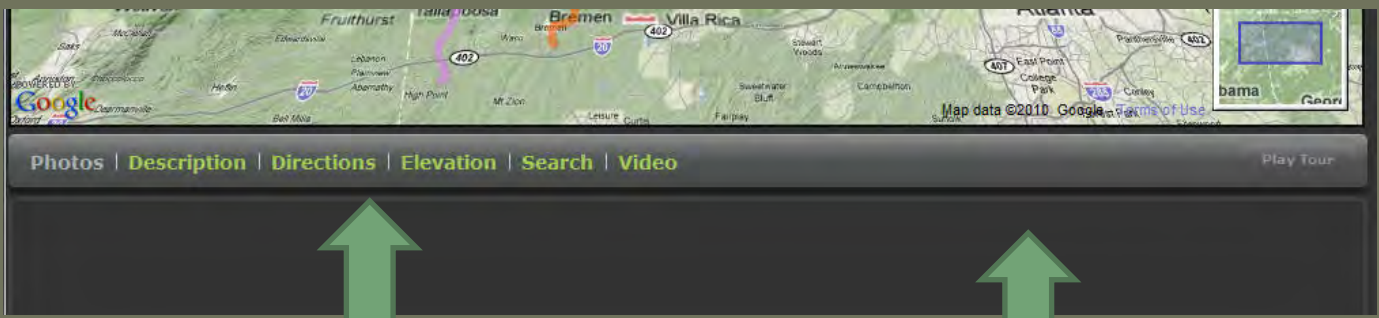




Route lines

## Main Map(Routes)

- To explore the Bike! Walk! Routes roll the mouse cursor over the Route line to identify the Route name.
- Click on a Route line to load detailed information into the various categories of the information Bar.



Information Categories

Information Window

# Information Bar

- The information bar contains a collection of categories that consist of detailed information on the currently selected route.
- The tabbed menu consists of "Photos", "Description", "Directions", "Elevation", "Search", and "Video" tabs.
- To select a specific category simply click on the desired tab. This will open the linked window below the information bar.



Photos | Description | Directions | Elevation | Search | Video

Play Tour



129\_1



129\_9



129\_7



129\_8



129\_4



129\_3



129\_2



129\_6



129\_5



Photo Thumbnails

Photo Full Size



Photos | Description | Directions | Elevation | Search | Video

Play Tour



129\_1



129\_9



129\_7



129\_8



129\_4



129\_3



129\_2



## Information Bar(Photos)

- Once the photo window has been opened and a route has been selected the window will load with all available relevant thumbnail images.
- To view the full size image simply click on the desired thumbnail.



[Photos](#) | [Description](#) | [Directions](#) | [Elevation](#) | [Search](#) | [Video](#)

[Play Tour](#)

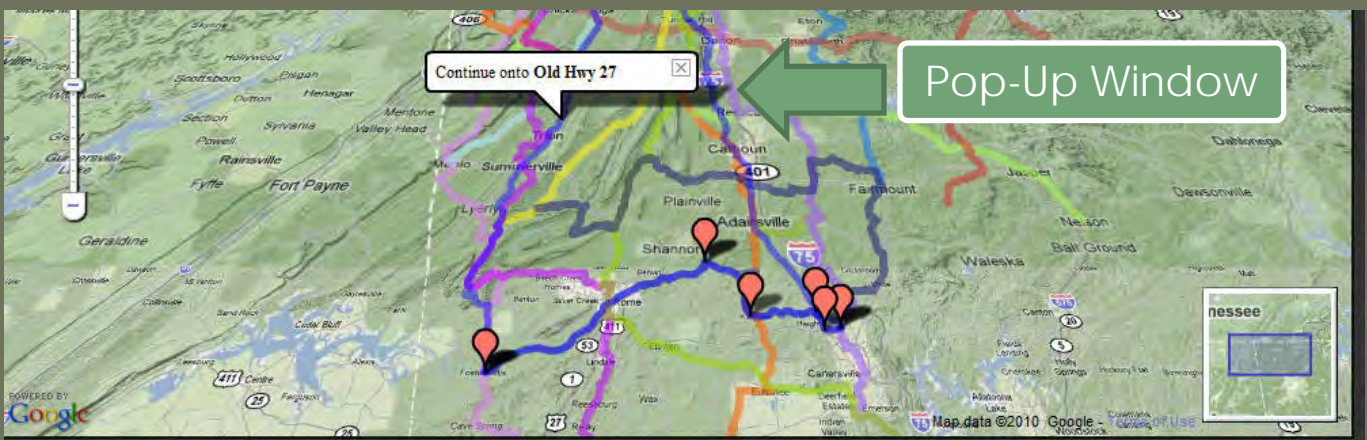
Route-129 Miles:59.028, Route Data in Feet Height start: 1463.254595, Height Finish: 1135.170605, Highest point: 1876.640423, Lowest point: 1040.026248, Vertical Rise: 836.6141745, Ascent: 4120.734914, Descent: 4448.818904, Passes through the following counties: Fannin County, Gilmer County, Pickens County



Route Description

## Information Bar(Description)

- Once the description window has been opened and a route has been selected the window will load a brief description of the route.



Photos | Description | Directions | Elevation | Search | Video Play Tour

Clear Directions Language: English Mode: bicycling

From: Chattanooga, TN  
 (Enter your current location or a proposed starting location)

To: R134West 34.166899, -85.339362  
 (Select the starting point of the bike route or enter you own end location)

Click to **Get Directions** to the selected route. Then click **Add Route** **Return Home**

73.9 mi (about 1 day 0 hours)

Step	Description	Distance
17	Continue onto <b>Old Lafayette Rd</b>	2.3 mi
18	Continue onto <b>Old Hwy 27</b>	0.7 mi
19	Turn left to stay on <b>Old Hwy 27</b>	121 ft
20	Turn right at <b>GA-1 S/Martha Berry Hwy/US-27 S</b>	5.7 mi
21	Continue onto <b>N Main St</b>	2.3 mi
22	Continue onto <b>GA-1 BUS S/E Lafayette Square/US-27 BUS S</b> Continue to follow GA-1 BUS	1.1 mi
23	Continue onto <b>S Main St</b>	0.5 mi
24	Slight right at <b>Trion Hwy</b>	7.2 mi
25	Continue onto <b>Old Hwy 27</b>	0.8 mi
26	Continue onto <b>U.S. 27 Bus</b>	0.3 mi
27	Continue onto <b>Old Hwy 27</b>	1.2 mi
28	Slight right at <b>4th St</b>	1.4 mi

Steps

# Information Bar(Directions)

- To find directions to the beginning of a Route, enter a starting location in the "From" text input field. Then use the drop down menu of Routes to select a starting point. Click "Get Directions" to load the directions steps to the starting point of the selected route. To add the actual route directions click "Add Route" button. If return directions are required click the "Return Home" button to load directions for the shortest path back home.
- Loaded directions appear as blue lines with red icons for the waypoints. A text equivalent is also loaded by steps in the window below.
- Click on a step to highlight it in blue and trigger a pop-up window on the main map for that step.
- Use the language menu to select the desired language.



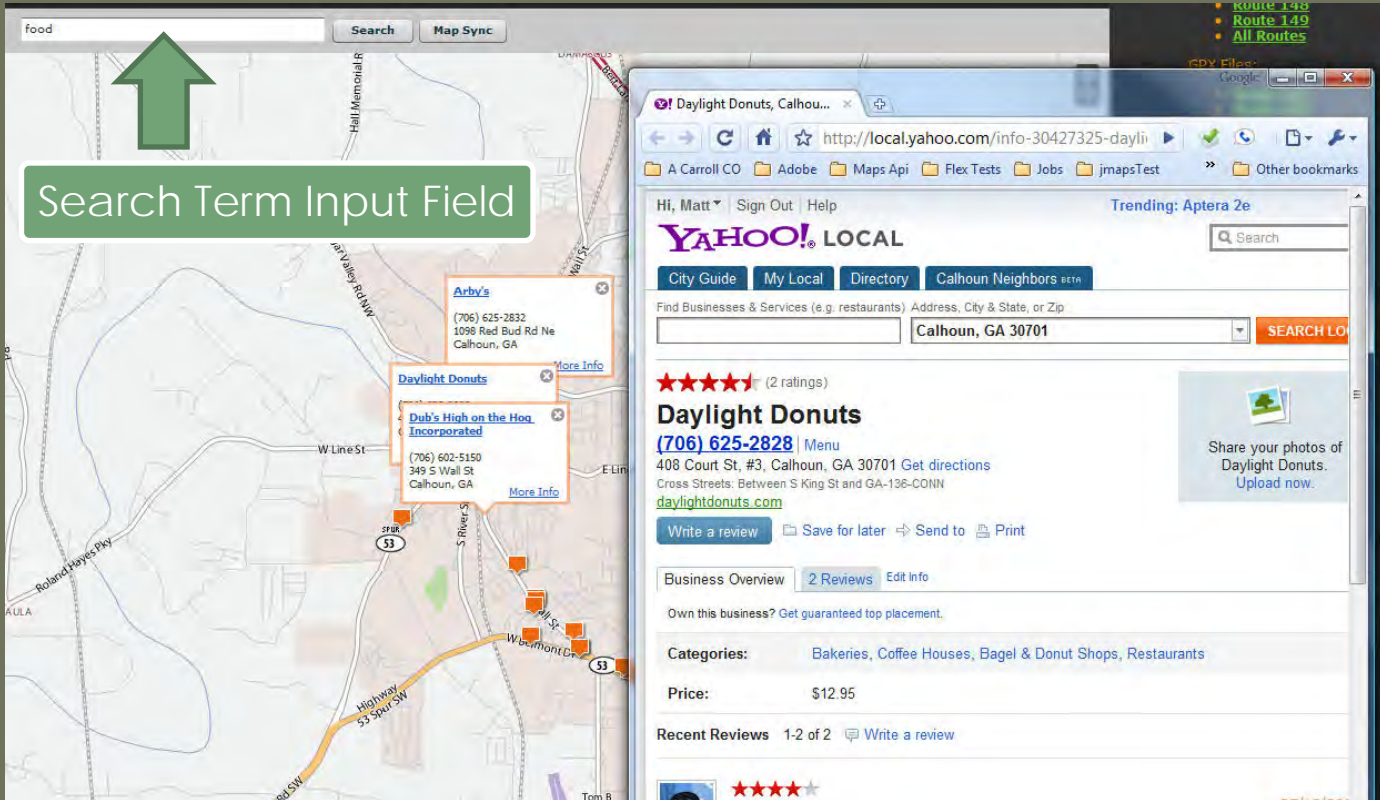
Photos | Description | Directions | Elevation | Search | Video Play Tour



← Elevation Graph

# Information Bar(Elevations)

- Once the elevation window has been opened and a route has been selected the window will load graph of the route elevation.
- The graphs run north for vertically oriented routes and east for horizontally oriented routes.
- To expand the size of the graph roll the mouse cursor of the graph.



## Information Bar(Search)

- Once the search window is opened a Yahoo map loads under the search control bar.
- The map is synchronized with the center point of the main map.
- To search for something, simply enter a search term in the input field of the control bar and click on the "Search" button.
- The results will appear as orange markers on the map. To view the marker's information click on the marker to expand the pop-up window. To view the full description of the selected result, right click on the title in the pop-up window and select "open in new window". This will open separate web page about the search result.

## Dunwoody Cycling - 2007 Cartecay Challenge

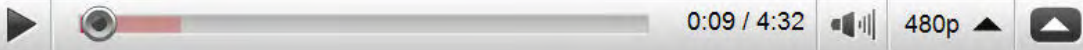
Play



"Play" button



YouTube



## Information Bar(Video)

- Once the video window has been opened and a route has been selected you must click the "Play" button to load the YouTube video for the selected route.
- If you select a different route you must click play again to refresh the video player.
- Use the standard YouTube controls to play, pause or skip forward as needed. Some videos allow you to increase the resolution of the video by adjusting the settings in the lower right of the video player.

# Downloads

- To download any of the related files, simply click on the route name and the download will begin.



## Downloads:

### Static Maps:

- [Route 103](#)
- [Route 105](#)
- [Route 106](#)
- [Route 108](#)
- [Route 109](#)
- [Route 112](#)
- [Route 117](#)
- [Route 118](#)
- [Route 121](#)
- [Route 124](#)
- [Route 125](#)
- [Route 129](#)
- [Route 130](#)
- [Route 134](#)
- [Route 139](#)
- [Route 145](#)
- [Route 148](#)
- [Route 149](#)
- [All Routes](#)

### KML Files:

- [Route 103](#)
- [Route 105](#)
- [Route 106](#)
- [Route 108](#)
- [Route 109](#)
- [Route 112](#)
- [Route 117](#)
- [Route 118](#)
- [Route 121](#)
- [Route 124](#)
- [Route 125](#)
- [Route 129](#)
- [Route 130](#)
- [Route 134](#)
- [Route 139](#)
- [Route 145](#)
- [Route 148](#)
- [Route 149](#)
- [All Routes](#)

### GPX Files:

- [Route 103](#)
- [Route 105](#)
- [Route 106](#)
- [Route 108](#)
- [Route 109](#)
- [Route 112](#)
- [Route 117](#)
- [Route 118](#)

Click to Download

